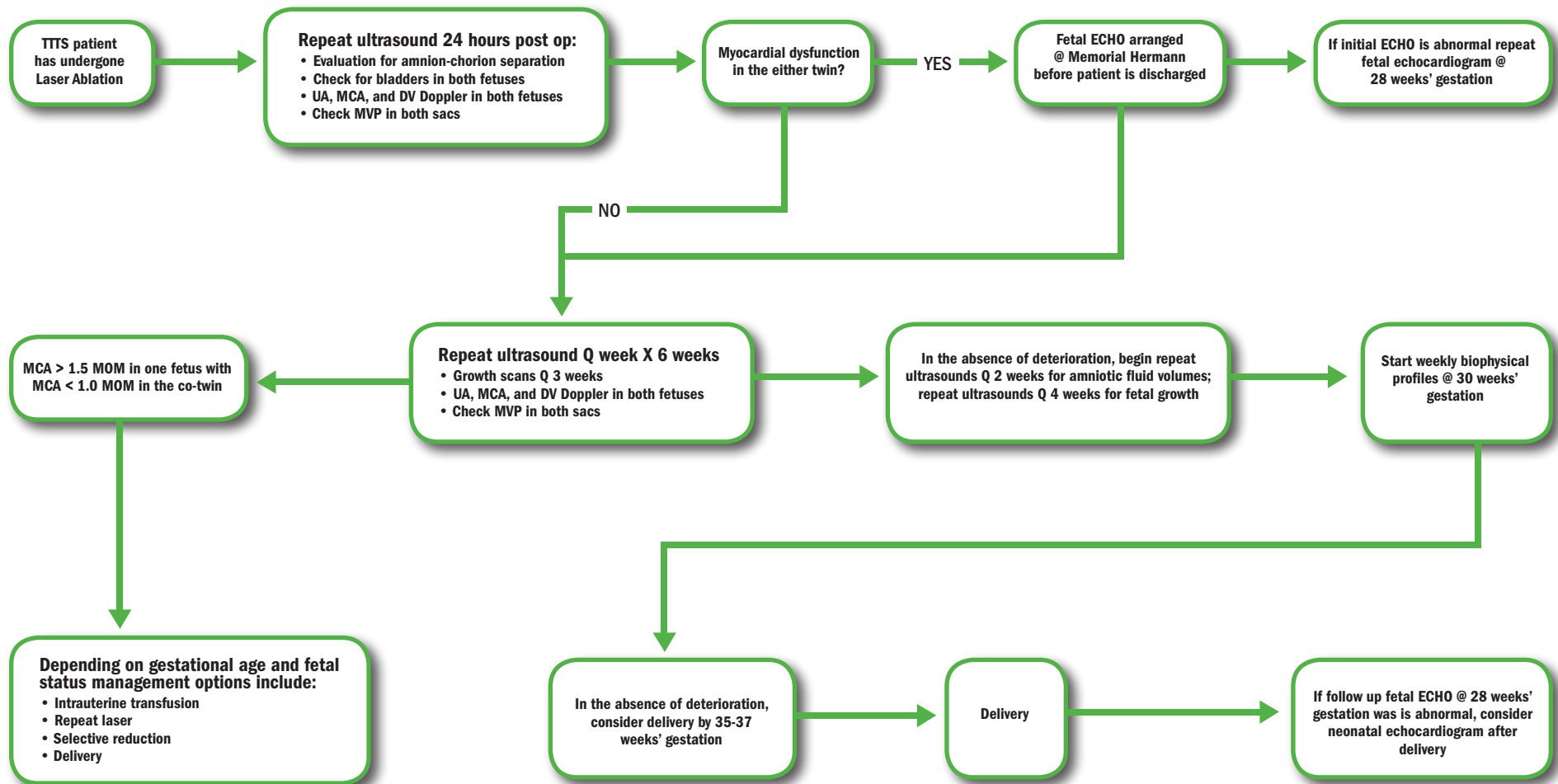


The Fetal Center TTTS Follow Up Algorithm



This algorithm was developed to promote consistency in the general care of patients. This algorithm is flexible and is not intended to set out a standard of care. Professional judgment must always be exercised in order to meet the specific requirements of individual patients. This algorithm does not preclude the use of professional judgment in a specific situation. This algorithm is the intellectual property of Memorial Hermann Health System and cannot be reproduced in whole or in part without expressed written permission.

Approved 05/15/2012