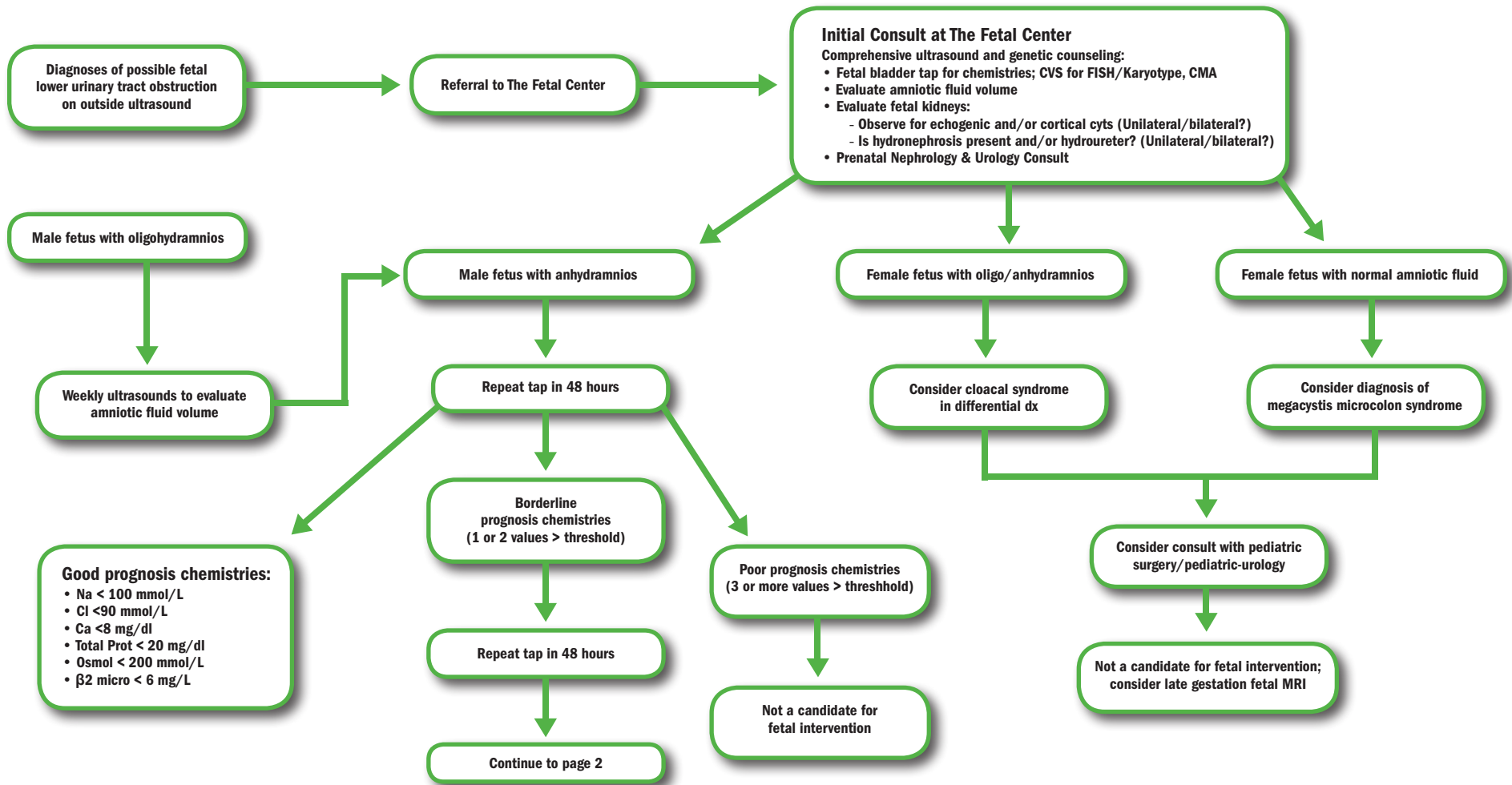


# The Fetal Center

## LUTO Prenatal Care Algorithm Page 1

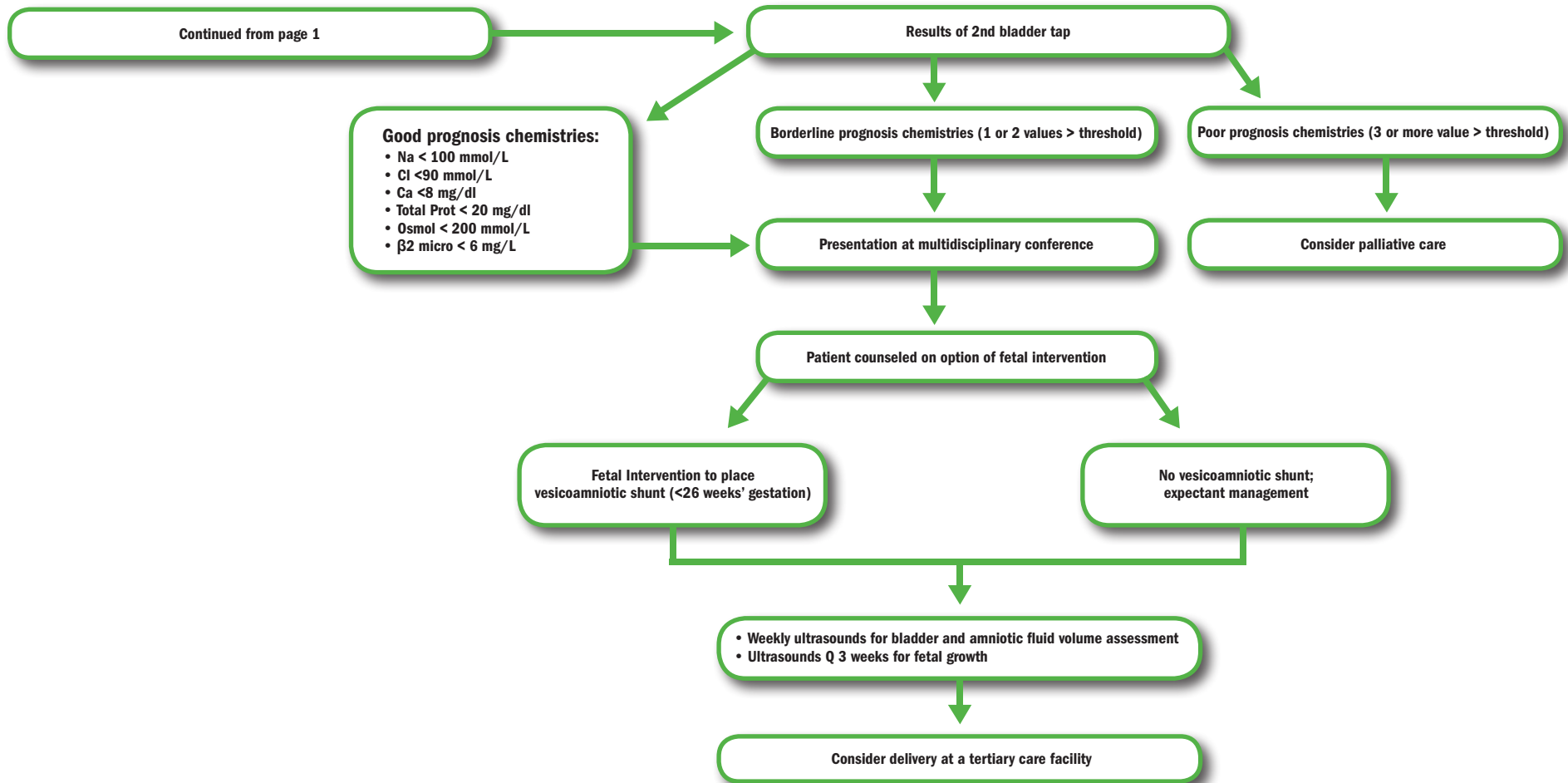


This algorithm was developed to promote consistency in the general care of patients. This algorithm is flexible and is not intended to set out a standard of care. Professional judgment must always be exercised in order to meet the specific requirements of individual patients. This algorithm does not preclude the use of professional judgment in a specific situation. This algorithm is the intellectual property of Memorial Hermann Health System and cannot be reproduced in whole or in part without expressed written permission.

Approved 09/02/2014

# The Fetal Center

## LUTO Prenatal Care Algorithm Page 2



This algorithm was developed to promote consistency in the general care of patients. This algorithm is flexible and is not intended to set out a standard of care. Professional judgment must always be exercised in order to meet the specific requirements of individual patients. This algorithm does not preclude the use of professional judgment in a specific situation. This algorithm is the intellectual property of Memorial Hermann Health System and cannot be reproduced in whole or in part without expressed written permission.

Approved 05/15/2012